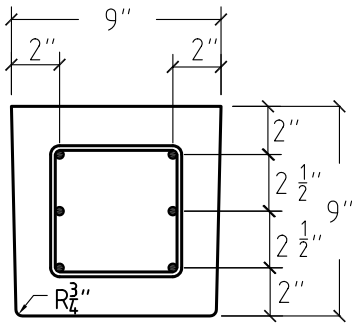
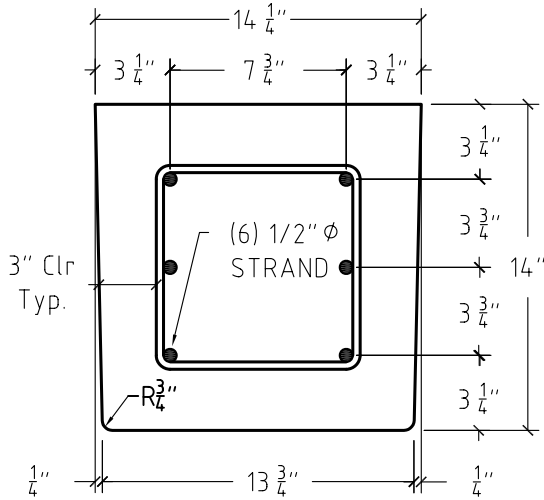


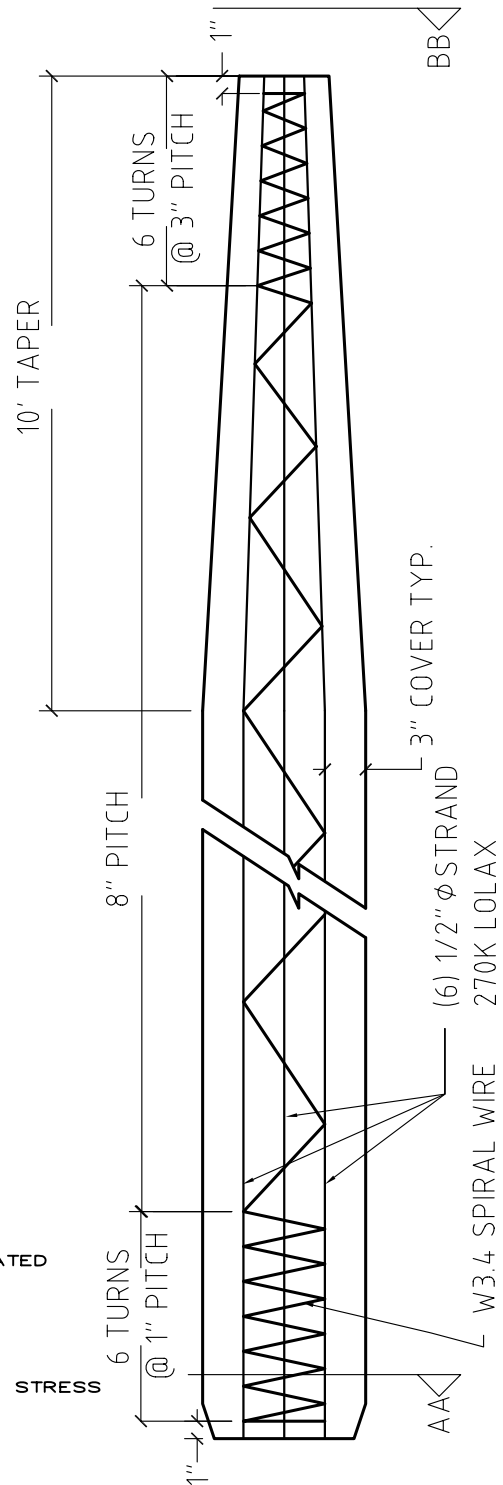
6 Strand 14" COMMERCIAL TAPERED PILE 5,000 PSI



SECTION BB



SECTION AA



SECTION PROPERTIES:

NOMINAL PILE SIZE: 14" X 14" AREA: 196 SQ. IN.
 APPROXIMATE WT./FT. : 200 LBS S: 457 IN³

SPECIFICATIONS:

CONCRETE: MIN. CYLINDER STRENGTH @ RELEASE = 3,250 PSI
 MIN. CYLINDER STRENGTH @ DRIVING = 5,000 PSI
 STEEL: STRAND = 1/2 DIA. 270K LOW RELAXATION
 7 WIRE - UNCOATED
 6 - 1/2" DIA/ STRANDS f_{pc} = 789 PSI (ACTUAL)
 PULL TO 30K + ADJUSTMENTS
 SPIRAL = W3.4 (5 GAUGE) HARD DRAWN WIRE, UNCOATED
 FLORIDA BUILDING CODE SECTION 1810.3 PRESTRESSED PILES
 DESIGN: f_{pc} = 700 PSI (REQUIRED)

CAPACITY:

MAXIMUM FULLY DRIVEN LOAD N f(f_{pc}) BASED UPON ALLOWABLE STRESS
 PER FBC SECTION 1810.3.3 = 141 TONS
 ALLOWABLE TENSION ONLY = 104.8 TONS

S&S PROJECT #	PROJECT	SHEET CONTENTS			
REVISION	<p align="center">S & S PRECAST P.O. BOX 366098 BONITA SPRINGS, FL 34136 (239) 992-8685 FAX: (239) 992-9226</p>		<p align="center">STANDARD 14" PILING</p>		
	THIS DRAWING IS NOT IN THE PUBLIC DOMAIN. IT IS THE EXCLUSIVE PROPERTY OF S&S AND IS MADE AVAILABLE FOR USE IN CONNECTION WITH SAID JOB. REPRODUCTION WITHOUT APPROVAL IS PROHIBITED				
	DWN JSS	DATE	SCALE N/A	SHEET NUMBER	
	CHK'D JSS	DATE			