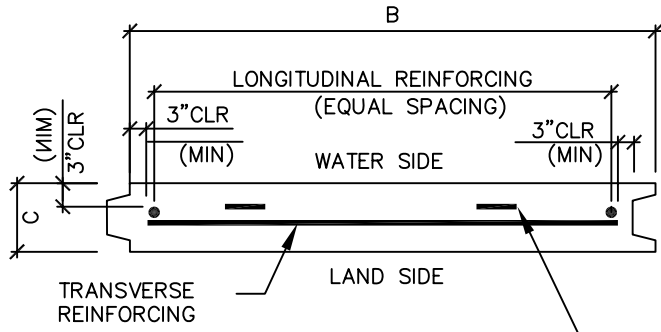


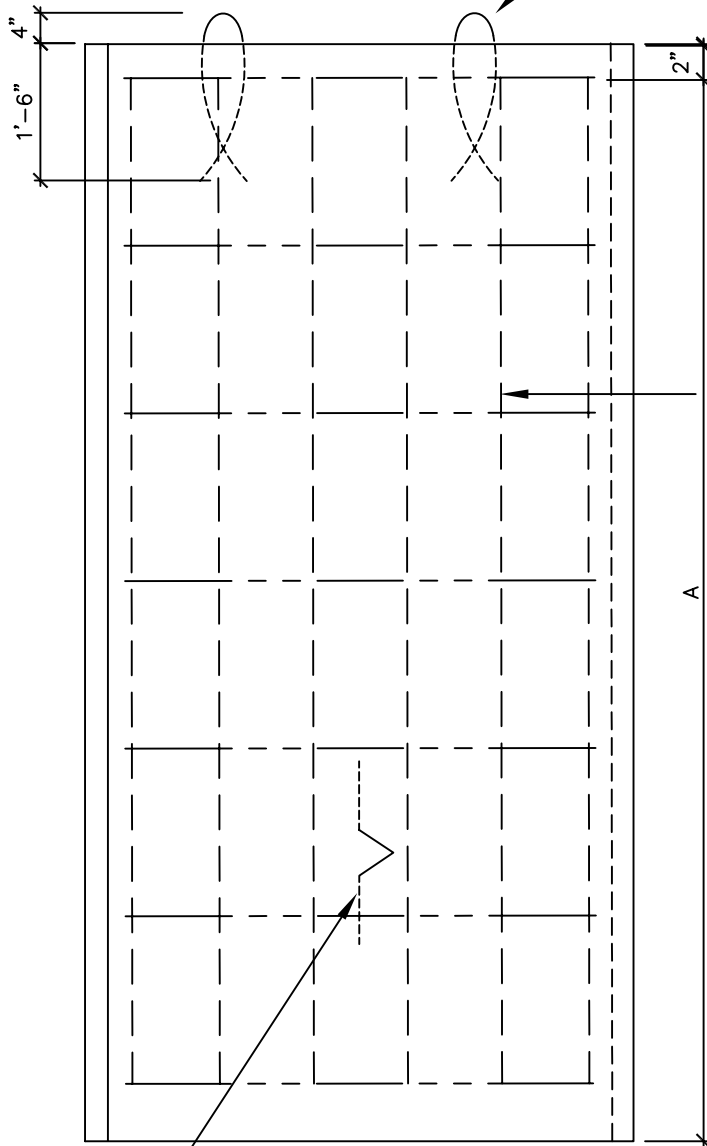
NOTES:

1. THE SUBMITTAL OF THIS DRAWING DOES NOT CONSTITUTE A REVIEW OF THE DESIGN AND IT'S APPLICATION FOR THE STATED PROJECT. IT IS THE RESPONSIBILITY OF OTHERS TO REVIEW AND DETERMINE THAT THIS DESIGN AND IT'S APPLICATION IS CORRECT. THE PURPOSE OF THIS DRAWING IS FOR ILLUSTRATION AND PRODUCTION USE ONLY.
2. CONCRETE: $F'_c = ?$ PSI @ 28 DAYS
3. STEEL REINF: ASTM A615 GRADE 60,

Right Hand 45° Unit



LIFTING LOOP
(1) 1/2" ϕ CABLE



LIFTING LOOP-MID

DIM	VALUE
A	?'-?''
B	?'-?''
C	8''
LONGITUDINAL REINFORCING	(?) #? @ ?''OC
TRANSVERSE REINFORCING	(?) #? @ ?''OC
TOTAL UNITS REQUIRED	