

Sheet Pile

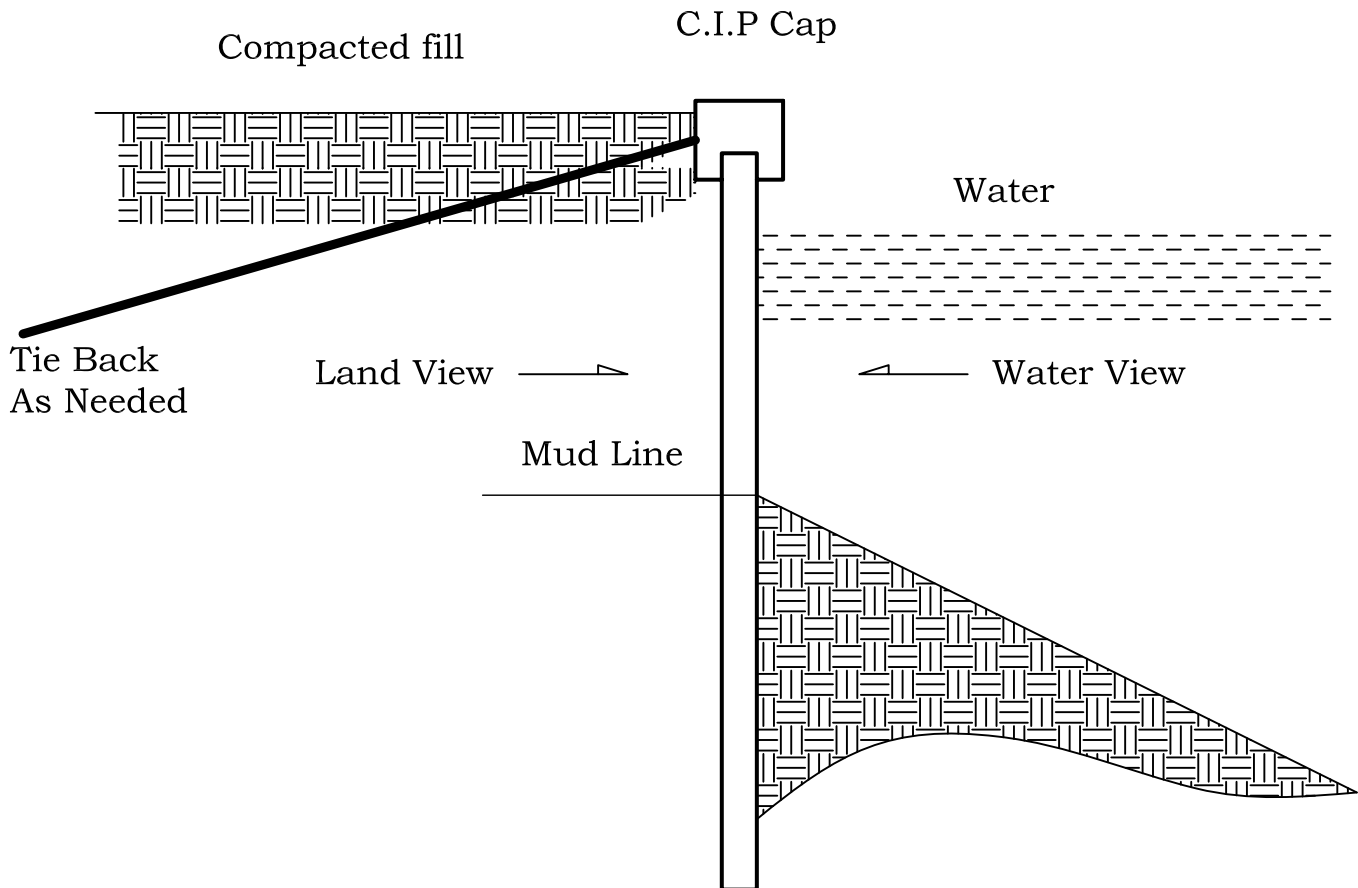
Section properties and allowable moments of prestressed sheet piles

Thickness inches	Section Properties per Foot of Width				Maximum Allowable Service Load Moment ⁽²⁾	
	Area In ²	Weight ⁽¹⁾ PSF	Moment of Inertia In ⁴	Section Modulus In ³	ft-kips per foot	
					f _c = 5,000 psi	f _c = 6,000 psi
8 ⁽³⁾	96.0	100.0	512.0	128.0	10.6	12.8
10.0	120.0	125.0	1000.0	200.0	16.6	20.0
12.0	144.0	150.0	1728.0	288.0	24.0	28.8

(1) Normal weight concrete

(2) Based on zero tension and maximum $0.4f_c$ compression

(3) Strand can be placed in a single layer in thin sections



Typical Wall Section Application